

# Quick-Load<sup>®</sup> PCR Marker



1-800-632-7799  
info@neb.com  
www.neb.com



N0475S 002130815081

## N0475S

125 gel lanes (1.25 ml) Lot: 0021308

30 µg/ml Store at 4°C Exp: 8/15

**Description:** Quick-Load<sup>®</sup> PCR Marker is a pre-mixed, ready-to-load molecular weight marker containing bromophenol blue as a tracking dye.

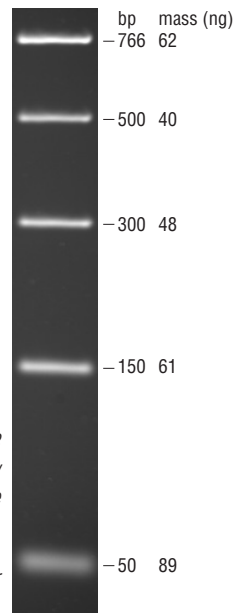
The Quick-Load PCR Marker consists of a proprietary plasmid which is digested to completion with appropriate restriction enzymes to yield 5 double-stranded DNA bands that are suitable for use as molecular weight standards for agarose gel electrophoresis. The digested DNA includes fragments ranging from 50–766 base pairs.

Ready-to-load, Stable at 25°C

Supplied in: 2.5% Ficoll-400, 11 mM EDTA, 3.3 mM Tris-HCl (pH 8.0 @ 25°C), 0.017% SDS and 0.015% bromophenol blue.

**Usage Recommendation:** We recommend loading 10 µl (0.3 µg) of Quick-Load PCR Marker per gel lane. The Quick-Load PCR Marker is not intended for precise quantification of DNA mass but can be used for approximating the mass of DNA in comparably intense samples of similar size. The approximate mass of DNA in each of the bands in our Quick-Load PCR Marker is indicated assuming a 10 µl (0.3 µg) load.

Quick-Load PCR Marker visualized by ethidium bromide staining on a 1.8% TBE agarose gel. Mass values are for 0.3 µg/lane.



Fragment	Base Pairs	DNA Mass
1	766	62 ng
2	500	40 ng
3	300	48 ng
4	150	61 ng
5	50	89 ng

**Preparation of DNA:** The double-stranded DNA is digested to completion with appropriate restriction enzymes, phenol extracted and equilibrated in storage buffer.

**Notes:** Quick-Load PCR Marker is stable for at least 6 months at 25°C.

For long term storage, store at 4°C or –20°C. If stored at –20°C, mix well after thawing.

**Reference:** Sambrook, J., Fritsch, E. F. and Maniatis, T. (1989). *Molecular Cloning: A Laboratory Manual*, (2nd ed.), (pp. 10.51–10.67). Cold Spring Harbor: Cold Spring Harbor Laboratory Press.

CERTIFICATE OF ANALYSIS

# Quick-Load<sup>®</sup> PCR Marker



1-800-632-7799  
info@neb.com  
www.neb.com



N0475S 002130815081

## N0475S

125 gel lanes (1.25 ml) Lot: 0021308

30 µg/ml Store at 4°C Exp: 8/15

**Description:** Quick-Load<sup>®</sup> PCR Marker is a pre-mixed, ready-to-load molecular weight marker containing bromophenol blue as a tracking dye.

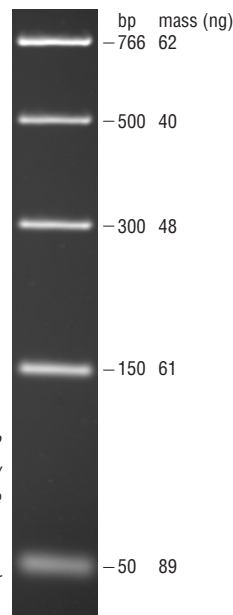
The Quick-Load PCR Marker consists of a proprietary plasmid which is digested to completion with appropriate restriction enzymes to yield 5 double-stranded DNA bands that are suitable for use as molecular weight standards for agarose gel electrophoresis. The digested DNA includes fragments ranging from 50–766 base pairs.

Ready-to-load, Stable at 25°C

Supplied in: 2.5% Ficoll-400, 11 mM EDTA, 3.3 mM Tris-HCl (pH 8.0 @ 25°C), 0.017% SDS and 0.015% bromophenol blue.

**Usage Recommendation:** We recommend loading 10 µl (0.3 µg) of Quick-Load PCR Marker per gel lane. The Quick-Load PCR Marker is not intended for precise quantification of DNA mass but can be used for approximating the mass of DNA in comparably intense samples of similar size. The approximate mass of DNA in each of the bands in our Quick-Load PCR Marker is indicated assuming a 10 µl (0.3 µg) load.

Quick-Load PCR Marker visualized by ethidium bromide staining on a 1.8% TBE agarose gel. Mass values are for 0.3 µg/lane.



Fragment	Base Pairs	DNA Mass
1	766	62 ng
2	500	40 ng
3	300	48 ng
4	150	61 ng
5	50	89 ng

**Preparation of DNA:** The double-stranded DNA is digested to completion with appropriate restriction enzymes, phenol extracted and equilibrated in storage buffer.

**Notes:** Quick-Load PCR Marker is stable for at least 6 months at 25°C.

For long term storage, store at 4°C or –20°C. If stored at –20°C, mix well after thawing.

**Reference:** Sambrook, J., Fritsch, E. F. and Maniatis, T. (1989). *Molecular Cloning: A Laboratory Manual*, (2nd ed.), (pp. 10.51–10.67). Cold Spring Harbor: Cold Spring Harbor Laboratory Press.

CERTIFICATE OF ANALYSIS